

Are we there...YET



VISIONARY / PASSIONATE / DYNAMIC
CONNECT: UOW



VISIONARY / PASSIONATE / DYNAMIC
CONNECT: UOW

UNIVERSITY OF
WOLLONGONG



Are we there ...YET: Quality assurance/enhancement and its relevance to our work

Martin Smith

President, Career Industry Council of Australia

Director, Graduate Career Development & Employability

Convenor, NAGCAS 2014 Annual Conference

Ahead of the Curve

ENHANCING QUALITY IN CAREER DEVELOPMENT
AND EMPLOYABILITY

University of Wollongong, Wollongong NSW

30th November - 3rd December

2014 NAGCAS CONFERENCE



VISIONARY / PASSIONATE / DYNAMIC
CONNECT: UOW

UNIVERSITY OF
WOLLONGONG



Session Objectives – compare and share

- Quality – who wants it? What does it look like? How can we measure it? Lets measure the right things
- Our work – at various lifestages...in various settings in education and the workplace
- Global trends – scholarship, research, practice
- UOW – a model to compare and share

Quality – assure AND enhance

- Who wants it?
- What does it look like?
- How can we measure it?
- What should we measure?
- Lets be clear on why it is important!

DISCUSSION OPPORTUNITY

The breadth of our activities

- Social inclusion – widening participation
- Student transitions – before, during and after uni
- Job ready – work ready – career ready
- Transitions into and through the workplace
- Who else is playing in our sandpit
- Professional Standards - competencies

Scholarship & Research to inform practice

- The literature around career development, employability, experiential learning & transitions (Aust & UK)
- <http://www.employability.ed.ac.uk/What/>
- <http://nagcas.org.au/ALTC/>
- Why use it...and how to use it

Global Trends UK

- Career guidance in schools, universities
- Matrix – QA measure in universities
- Gold Mark – quality in employer hosting of work experience
- Significant developments in employability & enterprise integrated into the learner experience
- LEAP
- Deregulated fee environment - students as consumers

UK QAA Research

- What have you done with our money? Is it worth it?
- We do not want technology to replace teaching
- We want to be employable
- We want personalised, equitable experiences
- Students want to be seen as stakeholders, as partners, in the life of the university

Students' Framing of Purpose: Student expectations for employability: “Future-focus”

- Across all subjects of study, the primary purpose for students entering higher education was to improve their career prospects and as a pathway for career enhancement.
- Students expected institutions to offer advice and guidance to support them in developing their employability for future careers within and beyond their formal course.

Global Trends – South Korea

- Participation and productivity agenda
- 3000 career practitioners (1500 more coming)
- Korea Job World – 100,000 visitors per month since June 2012



Global Trends - Australia

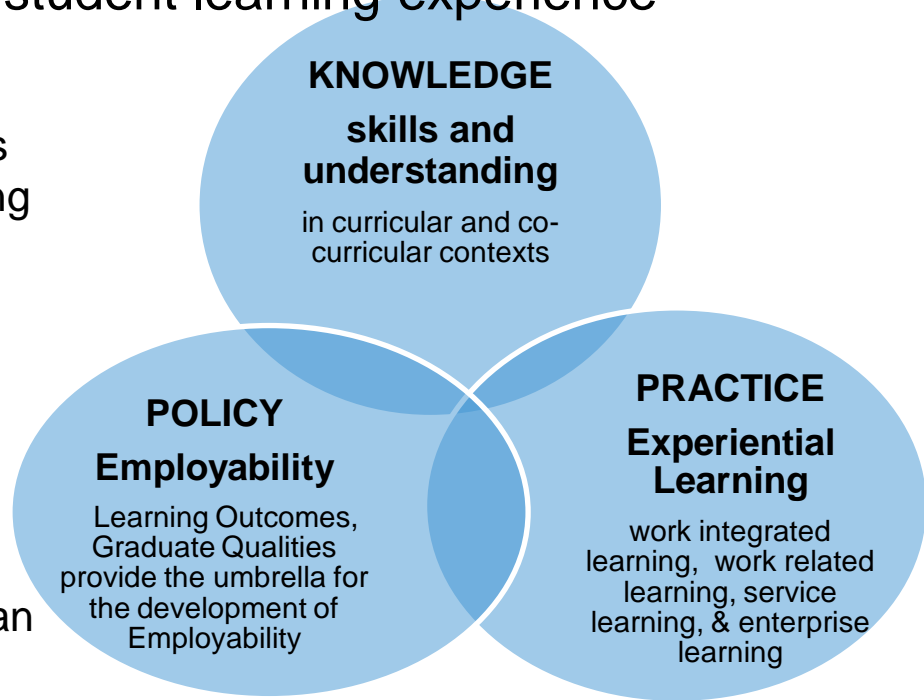
- Social inclusion – transitions pedagogy
- Experiential learning – work integrated learning - internships
- Career development – career ready for lifelong and lifewide contexts
- A personally determined and evolving future for public and private good
- Universities – government policy – deregulated fee environment > students as consumers

A conceptual model for the student learning experience

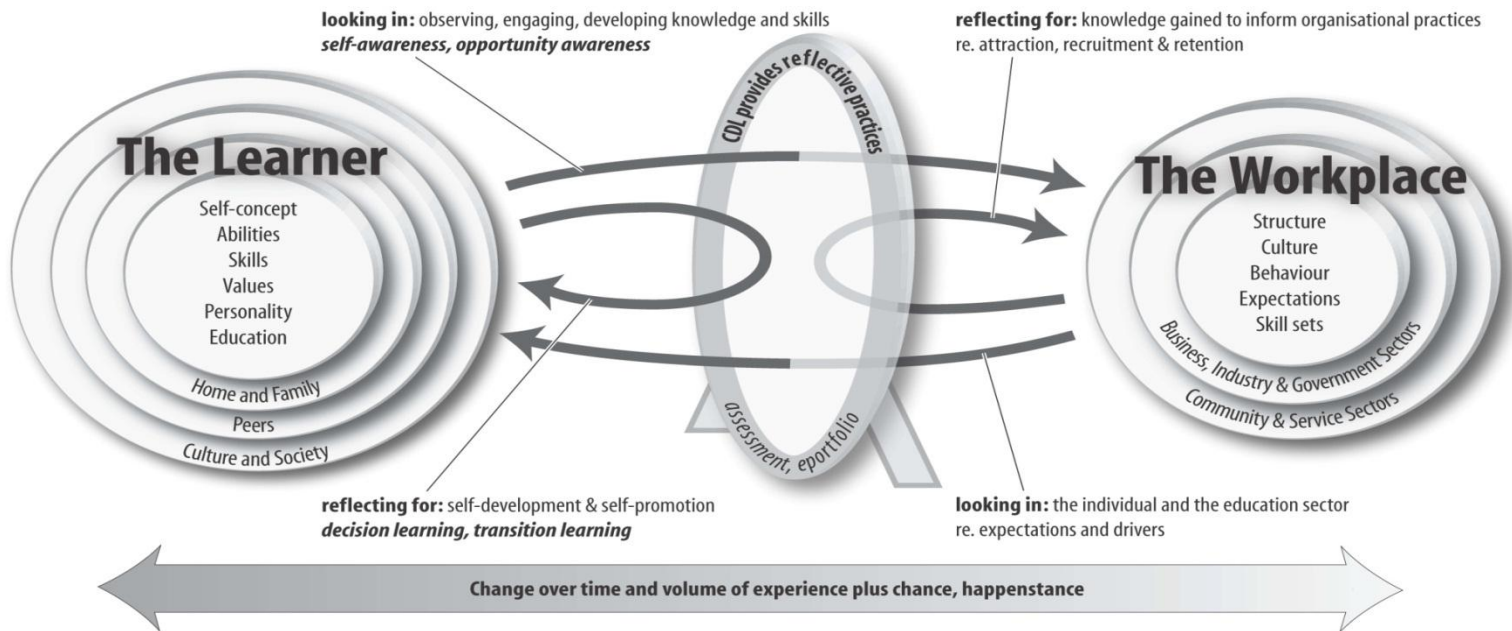
Career Development learning puts students at the heart of the learning process.

CDL helps students make sense of the policy, practice and knowledge.

When linked with assessment it can impact positively on attrition, completions and positive graduate outcomes



CDL & WiL: Looking from both sides of the two-way mirror





VISIONARY / PASSIONATE / DYNAMIC
CONNECT: UOW

UNIVERSITY OF
WOLLONGONG



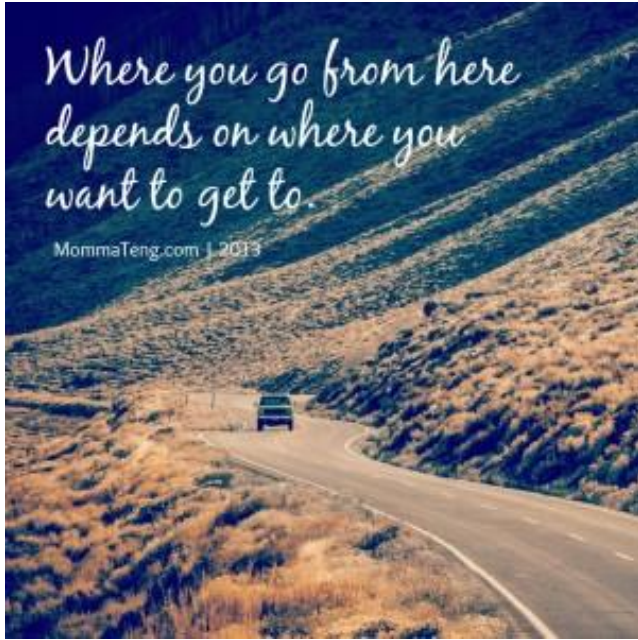
What's happening @ UOW?!

- **Internal**

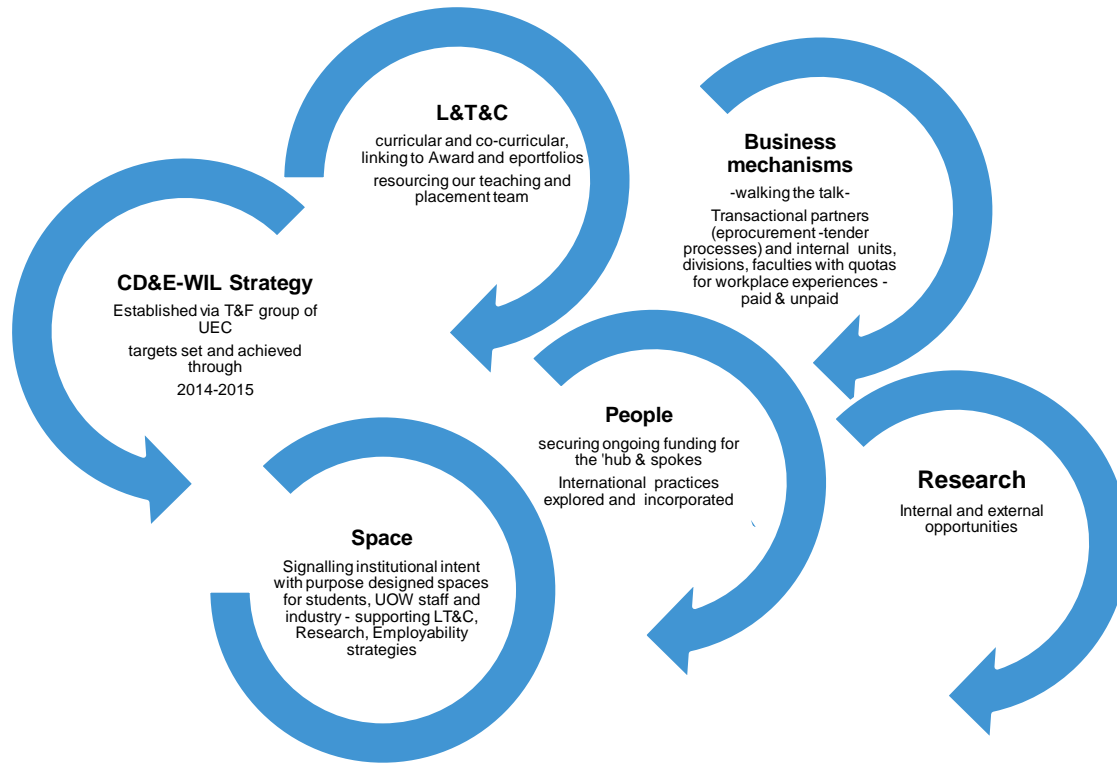
- New VC - New DVCE Portfolio
- Student Amenities Fee
- Task & finish group – UEC
- Curriculum transformations
- Co-curricular awards
- DVCE – ADE Directors interactions
- Student services in the faculties
- Budgets

- **External**

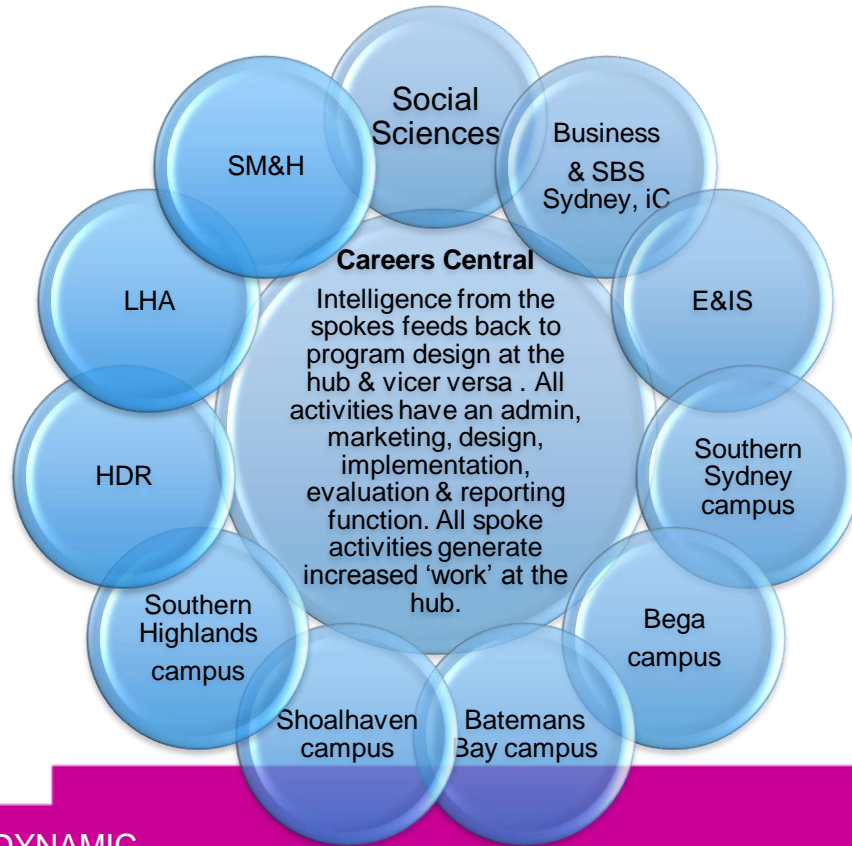
- Labour markets
- SME's & entrepreneurs
- Student expectations
- Our professional networks
- Technology and innovation
- Fair Work Australia
- The Budget



VISIONARY / PASSIONATE / DYNAMIC
CONNECT: UOW



SAF funded 'hub and spokes' model at UOW



UOW systems, structures, research

- DVCE Strategies
- Curriculum transformation project
- Co – curricular Award project
- Career Development & Employability Strategy
- WATTLE
- Hub and spokes
- Partnering with providers – technology enhanced

Ahead of the Curve

ENHANCING QUALITY IN CAREER DEVELOPMENT
AND EMPLOYABILITY

University of Wollongong, Wollongong NSW

30th November - 3rd December

2014 NAGCAS CONFERENCE



thank you!

